

April 2025 Edition

Tips for Virtel Administrators

You can add Logmode support to your current CSS customization, thereby reducing the need to duplicate sessions for each logmode type.

With v 4.62, Virtel introduced the ability to connect directly to any TN3270 sever on multiple platforms, such as z/VM, IBM i Series, VSEn, z/VSE and z/OS by IP address.

- **Reveal Feature:** Model Type is displayed when hovering cursor over the Reveal area.

When the Administrator needs to update a field (i.e. transaction), any section in RED can just be overtyped and saved using *P1=Update* there is no need to hit *P12-View/Add* to make the change.

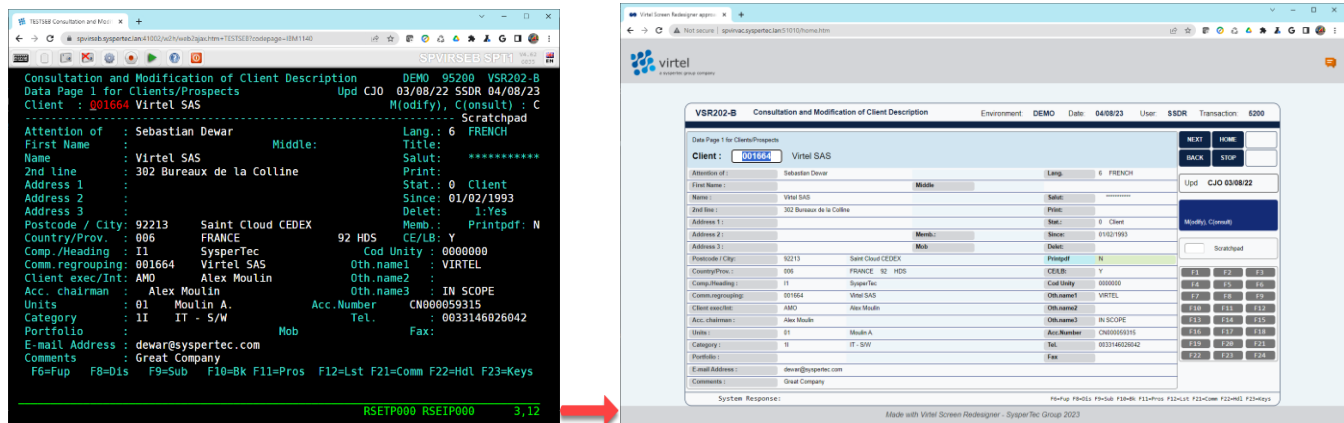
Internal Name	External Name	Description	Application
CLI-06	TEST4	test a virtel transaction	\$NONE\$
CLI-06A	TEST5	Test a virtel transaction sec=1	\$NONE\$
CLI-06C	TEST6	Test a virtel transaction	\$NONE\$
CLI-06D	TEST8	Test a virtel transaction	\$NONE\$
CLI-09	doc	Documentation directory	DOC-DIR
CLI-09A	CICSPTCK	Logon to CICS with RACF Passticket	CICSTS54
CLI-09B	CICSAPP1	Logon to CICS CICSAPP1	CICSTS54
CLI-10	CICSD	Logon to CICS Development Region	CICSTS54
CLI-10A	CICSPAUT	Logon to CICS (Auto signon to CICS)	CICSTS54
CLI-10B	Netview	Logon to Netview	NETVS
CLI-10D	NetvPASS	Logon to Netview with a RACF passticket	NETVS
CLI-10E	MULTI	Logon to Multiterm Session Manager	MULTI
CLI-10Q	CICST	Logon to CICS Test Region	CICSTS54
CLI-10Z	MULTI	Logon to Multiterm Session Manager Mod	MULTI
CLI-11	TSO	Logon to TSO	TSO
CLI-11A	TSOP5	Logon to TSO	TSO

P1=Update P2=Delete P3=Return P12=View/Add
P6=First page P7=Previous P8=Next

Virtel Screen Redesigner

Virtel team (Syspertec Group) is thrilled to announce the launch of Virtel Screen Redesigner (VSR), our cutting-edge solution for modernizing IBM green screens to customized Web Pages.

Say goodbye to outdated interfaces and hello to a new era of user experience. With Virtel Screen Redesigner, you can effortlessly transform your legacy applications into sleek, modern web standards without any web technology expertise required.



Key features include:

- ☒ Intuitive drag-and-drop interface
- ☒ Seamless integration with IBM mainframes: no external server required
- ☒ Rapid modernization of green screens, no-coding solution
- ☒ No disruption to existing workflows
- ☒ No middle-tier servers or client applets required

VIRTEL continues to offer free, no obligation trials of the complete Virtel Web Suite of mainframe access, UI modernization and application integration technologies, complete with expert technical support during the trial period. Please contact SDS for details.

Virtel Screen Redesigner User Training Videos

Virtel suite solutions (Syspertec Group) also provide basic training videos that the Virtel administrator can share with users: they can be found at: <https://ftp-group.syspertec.com/file/d/Training%20Videos/VSR%20Training/>

Virtel Online User Training Videos

Virtel (Syspertec Group) also provides basic training videos that the Virtel administrator can share with users: they can be found at: <https://ftp-group.syspertec.com/file/d/Training%20Videos/Virtel%20Training/>

Product Maintenance

We encourage our customers to update their Virtel product installations to the latest level to avoid experiencing Virtel product issues that have already been identified and corrected. We stand ready to support your product updates.

Virtel z/OS 4.62 PTFs

For z/OS customers who have installed Virtel V4.62, we would like to bring to your attention some important recently released PTFs that should be applied to your Virtel installation.

PTF6162	MULTIPLE CALLS TO SAF WITH INVALID PWD CAN LEAD TO REVOKED USER High-Impact PERvasive (HIPER)
PTF6155	LU NAILING FILLS INTERNAL TABLE WITH PATRICIA LIST ELEMENTS
PTF6147	LINE STATUS DISPLAY PF7 RETURNS TO TOP OF FIRST PAGE
PTF6142	POSSIBLE ABEND AFTER RECEIVING A SERIES OF INVALID VIRTELSESSION
PTF6136A	CORRECTION TO PTF6136
PTF6136	PTON 00000031 (00000049) error with CALLER=(BEGIN RULE
PTF6134	USSTAB - ENSURE PARM6 IS INITIALIZED BEFORE CALLING RECVMAP
PTF6120	VSR - INCORRECT LENGTH FOR INITIAL-COMPONENTS
PTF6115A	COMPLETES PTF6115 - 283-04C ABEND IN RACINIT AFTER TIMEOUT
PTF6115	SECU=5 - 283-04C ABEND IN RACINIT AFTER TIMEOUT
PTF6114	LOGON HANGS FOR REVOKED PASSPHRASE USER
PTF6113	SCENARIO NOT CALLED ON NON-HTTP LINE
PTF6109	MQCLOSE WHEN STOPPING AN MQ LINE
PTF6108	ENSURE DEACTIVATE FREES LU FOR REUSE

Virtel z/OS 4.61 PTFs

For z/OS customers who have installed Virtel V4.61, we would like to bring to your attention some important recently released PTFs that should be applied to your Virtel installation.

PTF6134	USSTAB - ENSURE PARM6 IS INITIALIZED BEFORE CALLING RECVMAP
PTF6114	LOGON HANGS FOR REVOKED PASSPHRASE USER
PTF6113	SCENARIO NOT CALLED ON NON-HTTP LINE
PTF6109	ADAPT TO RANDOM IP ADDRESS CHANGES

PTF6101	EXCESSIVE PASSWORD ATTEMPTS DUE TO INVALID REALM
PTF6093	USERPARM WITH SECU=5 and PassOnIdentification:True
PTF6080	IMSCONNECT NO CLOSE AFTER RC 8
PTF6075	ADAPT TO RANDOM IP ADDRESS CHANGES
PTF6074	DUPLICATE MESSAGE VIRIC52I
PTF6070	CASE\$ TESTING BLANK ON SCREEN
PTF6065	POSSIBLE INVALID HEADER IN 304 RESPONSES
PTF6063	RULESET NOT INITIALIZED CORRECTLY
PTF6061	Possible memory corruption leading to exhaustion of relay terminals High-Impact PERvasive (HIPER)
PTF6060	NO UNLOAD OF ARBO KEYWORD IN ENTRY STMT
PTF6057A	REINSTATE PASSWORD EXPIRY MSG
PTF6057	SIGNON BOX, CHANGE ERR=9 AND ERR=11 BY UID/PWD ERROR
PTF6056	COOKIES ARE LOST AFTER EXITING THE VIRTEL SESSION
PTF6053C	COMPLETES PTF6053
PTF6053B	CORRECTS AN ERROR IN PTF6053A
PTF6053A	CORRECTS AN ERROR IN PTF6053
PTF6053	IF\$ SCREEN-IS-UNMODIFIED,THEN=FAIL MAY BLOCK DUE TO SNA FLAGS
PTF6052	CORRECT MDT FLAG RESET IN VIR0023
PTF6051	VIRT923E ERROR REQ: PTON - ERRNO: 00000031 (00000049)
PTF6041	S0C4-38 AFTER SNAP

Virtel z/VSE VSEn 4.62 PTFs

For z/VSE customers who have installed Virtel V4.62, we would like to bring to your attention some important recently released PTFs that should be applied to your Virtel installation. (Virtel is certified with 21st Century Software)

PTF6142	POSSIBLE ABEND AFTER RECEIVING A SERIES OF INVALID VIRTELSESSION
---------	--

Virtel z/VSE VSEn 4.61 PTFs

For z/VSE customers who have installed Virtel V4.61, we would like to bring to your attention some important recently released PTFs that should be applied to your Virtel installation.. (Virtel is certified with 21st Century Software)

PTF6061	Possible memory corruption leading to exhaustion of relay terminals High-Impact PERvasive (HIPER)
---------	---

PTF6101	EXCESSIVE PASSWORD ATTEMPTS DUE TO INVALID REALM
---------	--

Virtel z/OS 4.60 PTFs

For z/OS customers who have installed Virtel V4.60, we would like to bring to your attention some important recently released PTFs that should be applied to your Virtel installation.

PTF6134	ENSURE PARM6 IS INITIALIZED BEFORE CALLING RECVMAP
PTF6074	DUPLICATE MESSAGE VIRIC52I
PTF6061	POSSIBLE MEMORY CORRUPTION WHEN RULE IS ABSENT
PTF6037	POSSIBLE MEMORY OVERLAY LEADING TO ABEND
PTF6027	CLONE VALUE NOT ACCEPTED FROM PARM FIELD IF NO IP ADDR
PTF6026	B37 ON VIRSTAT FOR STATS=SMF
PTF6015A	FIX POSSIBLE ABEND CONDITION INTRODUCED BY PTF6015
PTF6015	VIRTEL CPU LOOP CAN OCCUR FOLLOWING TELNET PING
PTF6012	CORRECT MESSAGE VIR0072I FOR SILENCE MESSAGE ADDED
PTF5999	SUPPORT FOR MAP\$ FROM VARIABLE, JSON,VAR=
PTF5998	INVALID DISPLAY IN TERMINAL STATUS SCREEN
PTF5970	DISABLE LINES IF ARBO TYPE 2
PTF5961	COMPLETES 5927 ALLOW UNSOLICITED BIND FROM AN APPLICATION LIKE IBM DEBUGGER TOOL.
PTF5958	VIRS125E MQSAEH34 VIRSV REQUEST ERROR - R15 : 0000080C
PTF5940	REMOVE QUOTES AND UC CONVERSION FROM LOCADDR KEYWORD
PTF5937	AVOID ABEND AEIV AFTER UPDATING ARBO RULES @ HIGHER VIRTEL RELEASE
PTF5927B	CORRECT ERROR IN PTF5927A
PTF5927A	CORRECT ERROR IN PTF5927
PTF5910A	CORRECTS AN ERROR IN PTF5910
PTF5927	ALLOW UNSOLICITED BIND FROM AN APPLICATION LIKE IBM DEBUGGER
PTF5918	SCENARIO DISCARD FLAG IS RESET IF APPLICATION ISSUES CLOSEDESTPASS (customer specific)
PTF5912A	CORRECTS PTF5912
PTF5912	POSSIBLE ABEND ICH409I 283-024 ABEND DURING RACINIT PROCESSING PTF FOR VIRTEL VERSION >>>> 4.60 <<<<
PTF5910	VIRPLEX STARTUP INCORRECT IN VIRTEL 4.60

PTF5909	PASSPHRASE FIX FOR NOMIXEDCASE ENVIRONMENTS
PTF5908	IMPROVE SUPPORT FOR OMEGAMON GRAPHIC CHARACTERS
PTF5904	USERPARM 100% CPU AT VIRTEL STARTUP High-Impact PERvasive (HIPER)

Virtel z/VSE 4.60 PTFs

For z/VSE customers who have installed Virtel V4.60, we would like to bring to your attention some important recently released PTFs that should be applied to your Virtel installation.

PTF6061	POSSIBLE MEMORY CORRUPTION WHEN RULE IS ABSENT
PTF5982A	Correction -VSE ABEND AFTER /READ COMPLETES ON CLOSED SESSION
PTF5982	VSE ABEND AFTER /READ COMPLETES ON CLOSED SESSION
PTF5963	VSE abend on /READ on CLOSED session
PTF5931	DECLARE\$ DISPLAY PROBLEMS

W2H-DIR/DOC-DIR Update Levels Virtel v4.62

UPDT6152 is a cumulative maintenance for all files stored in W2H-DIR/DOC-DIR directories with a Virtel product installation.

6152	Keyboard event for decimal dot added for physical keyboard with comma, customization: renaming of the Virtelname property
6148	Add new parameter UPARMS=(USERPARM,VIRPLEX) for sharing of VIRHTML in a Virplex (contact Support for more information)
6137	Specific treatment for ATTN key in AJAX request, VWA removeChild(node) fix, default behavior for PF1 key and new way to customize colors for 3270 and gray styles (cf note 7)
6127	correction of a potential bug due to SYSANG undefined (the browser language is taken), modified character color above the cursor, changed background color for hotspots and hotspot bug fixed
6125	keypad logic (ATTN, CLEAR, PA1, PA2, PA3), auto capture fix, parameters settings panel IE11 compatibility, capture print style adapted, 3270 color and cursor classes reworking, caret no setting fix, hotspots reworking, macro logic adapted to make it relate possibly various keyEvent, joker key adaptation, keycode reworking.
6121	Keymapping enhancements and corrections
6103	Base Update level for v462

W2H-DIR/DOC-DIR Update Levels Virtel v4.61

UPDT6069 is a cumulative maintenance for all files stored in W2H-DIR/DOC-DIR directories with a Virtel product installation.

6152	Keyboard event for decimal dot added for physical keyboard with comma, customization: renaming of the Virtelname property
6137	Specific treatment for ATTN key in AJAX request, VWA removeChild(node) fix, default behavior for PF1 key and new way to customize colors for 3270 and gray styles (cf note 7)
6069	Correct issues where the users have to hit ATTN key several times to return to application
6064	Fix a bug (click twice was needed on the options button)
6055	Color change in particular change the CSS names for the NOCOLOR

W2H-DIR/DOC-DIR Update Levels Virtel v4.60

UPDT6010 is a cumulative maintenance for all files stored in W2H-DIR/DOC-DIR directories with a Virtel product installation.

6058	W2H cumulative SVN update
6042	Add buttons in the toolbar for TBT WebAccess features
6035	Small Adjustments in VWA, Possible Adding of Options in the TBT400 WebAccess Toolbar
6010	Avoid the Update 6007 blocking Virtel with EDGE in IE11 compatibility mode
6007	Correct a change in the implementation of (new Date).toLocaleTimeString() in Chrome
5968	Improvement on update 5965 (TBT WebAccess) and minor correction to cAppMenu-main for favicon (Virtel WebAccess)
5965	Support for input fields with FER attribute (TBT WebAccess) and minor change in WEB2HOST.htm template (Virtel WebAccess)
5960	Enhancement of cAppMenu (PFkeys allowing to connect an application TSO, CICS, ...) Add of an option to inhibit the Copy/Paste Append Mode
5946	New VWA Key Mapping option - Make scroll up/down mouse actions customizable

z/OS, VSEn and z/VSE Product Support

Virtel v4.60 thru v4.62 are certified as compatible with all levels up to z/OS 3.1, z/VSE 6.2 and VSEn 6.3 (from 21CS). See our Web site for product support details.

<https://www.virtelweb.com/support-resources/product-support.html>

Send comments and suggestions to: info@sdsusa.com